

YEAR 2007

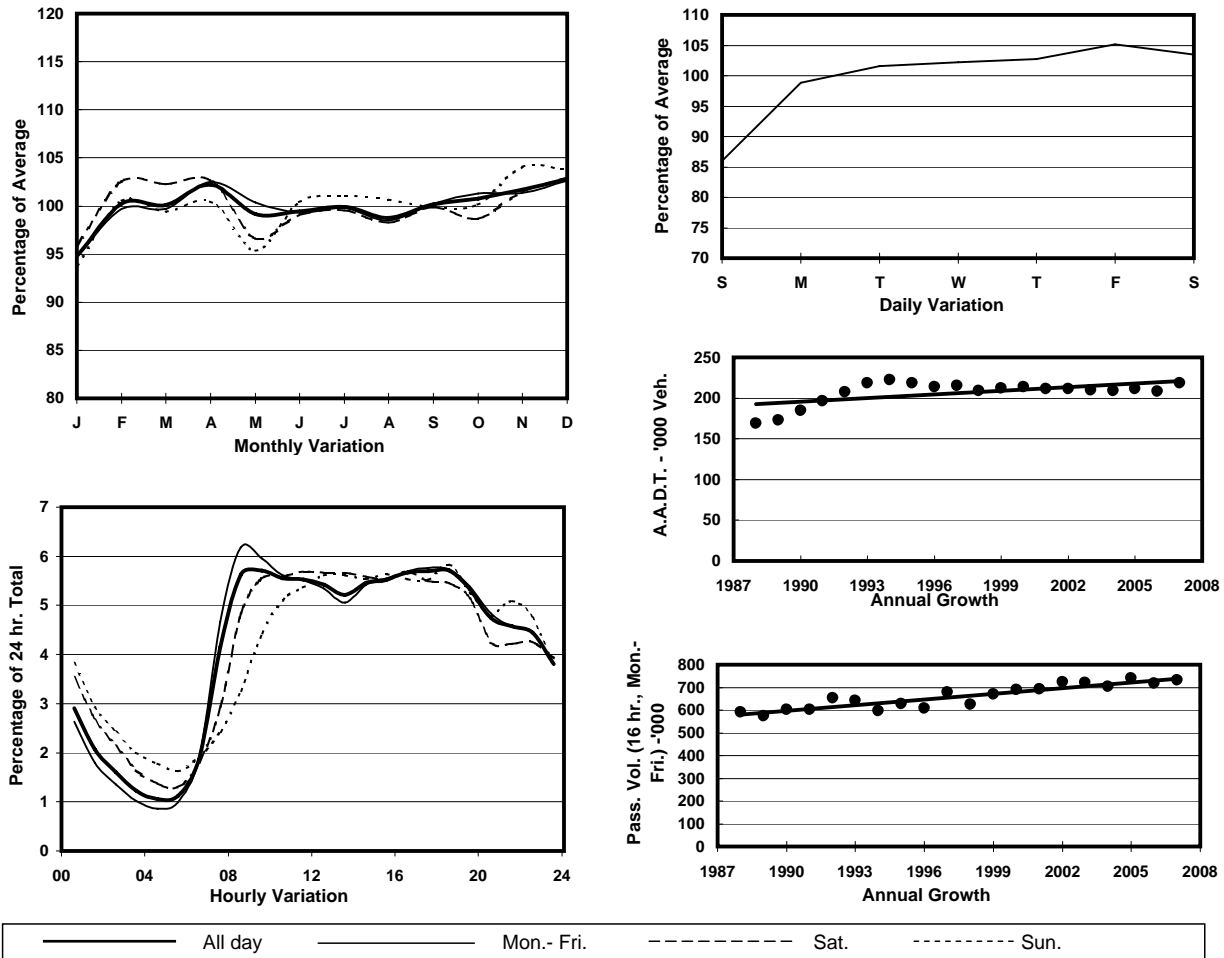
Location

Screenline G-G(East end of Causeway Bay)

Stations on Cordon/Screenline

1002, 1107, 2204 and 2214

1. TRAFFIC FLOW VARIATION AND GROWTH



2. TRAFFIC CHARACTERISTICS (BY DIRECTION)

Parameter	All - Day	Mon. - Fri.	Sat.	Sun.
EAST BOUND				
A.A.D.T.	109390	112420	113810	95630
R 12 / 24 - %	63.8	65	62.1	58.4
R 16 / 24 - %	84	85.4	80.8	79.1
AM Peak Hour	0900-1000	0800-0900	0900-1000	0900-1000
One-way flow at AM peak hour	5850	6570	5740	4000
T - % (AM)	-	11.8	-	-
PM Peak Hour	1600-1700	1600-1700	1600-1700	1600-1700
One-way flow at PM peak hour	6500	6730	6720	5490
T - % (PM)	-	11.7	-	-
Prop.of commercial vehicles - 16 hr.	-	10.7	-	-

WEST BOUND				
A.A.D.T.	109230	112410	114240	94010
R 12 / 24 - %	66.7	67.9	65.3	61.5
R 16 / 24 - %	84.7	85.9	82.4	80.5
AM Peak Hour	0900-1000	0800-0900	0900-1000	0900-1000
One-way flow at AM peak hour	6640	7330	6920	4410
T - % (AM)	-	10.8	-	-
PM Peak Hour	1800-1900	1700-1800	1600-1700	1800-1900
One-way flow at PM peak hour	6180	6420	6260	5620
T - % (PM)	-	11.2	-	-
Prop.of commercial vehicles - 16 hr.	-	9.9	-	-

3. OTHER INFORMATION AND COMMENT

4. Vehicle classification and occupancy - Monday to Friday

Time		Class of vehicle									
		Motor	Private	Taxi	Private	PLB	Goods veh.		Non	Fr. Bus	
		Cycle	Car		LB		Light	M & H	Fr. Bus	SD	DD
0700-0800	Pro	3.2	20.7	40.3	3.1	2.4	11.6	2.2	7.2	0.6	8.6
	Ocp	1.1	1.4	1.9	5.4	10.2	1.4	1.4	14.2	15.7	35.3
0800-0900 Peak Hour	Pro	4.3	41.3	29.0	1.7	1.2	11.2	2.0	3.4	0.3	5.6
	Ocp	1.1	1.3	1.9	5.6	13.1	1.7	1.5	10.9	21.3	54.2
0900-1000	Pro	2.0	34.7	32.6	0.9	1.4	17.4	2.8	2.0	0.3	5.8
	Ocp	1.1	1.4	1.9	2.8	9.6	1.8	1.4	12.3	15.4	30.2
1000-1100	Pro	3.1	30.2	33.1	1.5	1.4	21.1	2.7	1.1	0.3	5.4
	Ocp	1.1	1.4	1.9	2.3	6.0	1.7	1.5	10.5	14.3	21.8
1100-1200	Pro	2.4	27.7	34.4	1.9	1.3	21.1	3.7	1.8	0.3	5.4
	Ocp	1.1	1.5	1.8	3.0	7.3	1.6	1.5	3.8	13.6	24.0
1200-1300	Pro	2.2	35.0	31.3	1.4	1.4	18.8	3.1	2.2	0.3	4.3
	Ocp	1.0	1.5	2.0	3.8	6.7	1.6	1.5	9.0	13.1	24.6
1300-1400	Pro	2.6	33.2	28.7	1.6	1.5	21.3	3.0	2.4	0.3	5.2
	Ocp	1.0	1.5	1.8	2.6	7.9	1.7	1.4	11.7	12.1	23.0
1400-1500	Pro	3.2	34.6	27.6	1.5	1.2	21.9	3.2	1.7	0.3	4.9
	Ocp	1.0	1.5	2.0	2.0	9.3	1.6	1.4	5.3	12.5	24.0
1500-1600	Pro	2.9	33.0	31.5	2.3	1.3	19.0	2.6	2.6	0.3	4.5
	Ocp	1.1	1.5	2.0	5.4	8.7	1.7	1.4	15.4	14.7	25.0
1600-1700	Pro	1.8	37.1	27.1	2.0	1.1	19.6	2.4	3.2	0.3	5.5
	Ocp	1.1	1.5	1.8	2.4	8.5	1.8	1.5	9.4	14.8	27.7
1700-1800	Pro	3.8	33.5	34.5	1.7	1.3	14.2	1.9	2.4	0.3	6.3
	Ocp	1.1	1.5	1.7	3.1	11.1	1.7	1.6	11.5	18.9	37.5
1800-1900	Pro	3.7	43.3	29.7	1.3	1.8	11.0	1.2	1.8	0.3	5.9
	Ocp	1.1	1.4	2.0	3.6	14.0	1.6	1.6	8.3	19.0	52.6
1900-2000	Pro	2.4	48.5	33.2	0.2	1.7	5.7	0.7	1.7	0.3	5.7
	Ocp	1.2	1.4	2.1	1.6	13.6	1.5	1.5	10.8	15.3	37.5
2000-2100	Pro	2.3	39.3	43.6	0.2	2.1	4.2	0.5	1.2	0.2	6.4
	Ocp	1.2	1.5	1.9	2.2	12.0	1.4	1.1	9.1	10.2	28.4
2100-2200	Pro	3.7	30.8	50.8	0.3	2.7	4.4	0.6	0.3	0.3	6.1
	Ocp	1.2	1.7	2.0	2.3	11.8	1.5	1.6	6.3	10.3	29.6
2200-2300	Pro	2.5	33.3	52.3	0.1	2.5	3.0	0.3	0.4	0.2	5.3
	Ocp	1.2	1.6	1.8	2.7	10.8	1.4	1.4	3.6	8.1	30.2
16 hours	Pro	2.9	35.0	34.4	1.4	1.6	14.4	2.1	2.2	0.3	5.7
	Ocp	1.1	1.5	1.9	3.6	10.3	1.6	1.5	10.8	14.6	32.4

Legend

- Pro.** Proportion of vehicles in % (Sum may not add up to 100% due to figure rounding)
- Ocp.** Average occupancy of vehicles
- M & H** Medium and Heavy